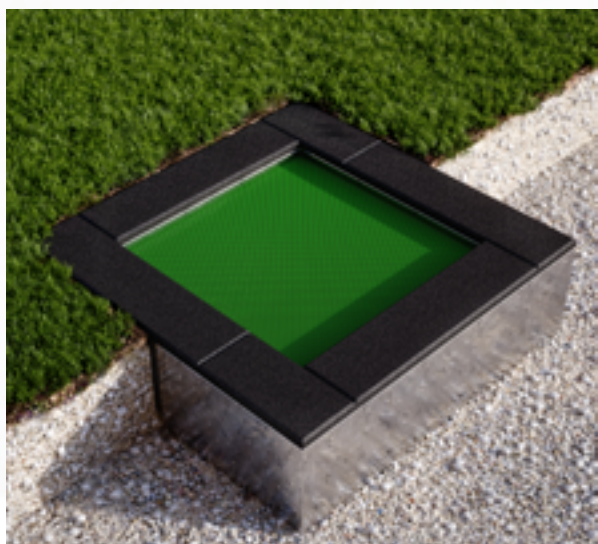


PRODUCT CARD

SQUARE TRAMPOLINE

Cat. name: TS1 x 1.5 x 1.5

One-piece non-opening - jump mat: mesh



| | |
|-------------------------------------|--------------------|
| Length | 150 cm |
| Width | 150 cm |
| Height | 40 cm |
| Depth of foundation | 40 cm |
| Dimension of the jumping mat | 100 x 100 cm |
| Area of use of the device | 450 x 450 cm |
| Weight of the trampoline | ~150 kg |
| Bending of the mat | do 25 cm (+/- 3cm) |

Construction and support structure made of hot-dip galvanized steel.

Jump mat: Strong straps made of polypropylene yarns with an even and dense weave. Belts finished with a stainless steel fastening, attached to springs, which are attached to the rods inside the construction. The edges of the jump mat are covered with a 40 mm thick EPDM / SBR rim, with a polyurethane-based adhesive glued to the frame.

Installation instructions

Make a 40 cm deep earth OR concrete hole. The opening should be larger than the dimensions of the trampoline by 30-40 mm per side. Before inserting the trampoline, level the ground.



Number of users per 1 trampoline: 1
User age: from 3 years upwards
Freefall: max 90 cm



Trampoline made in accordance with PN EN1176-1

