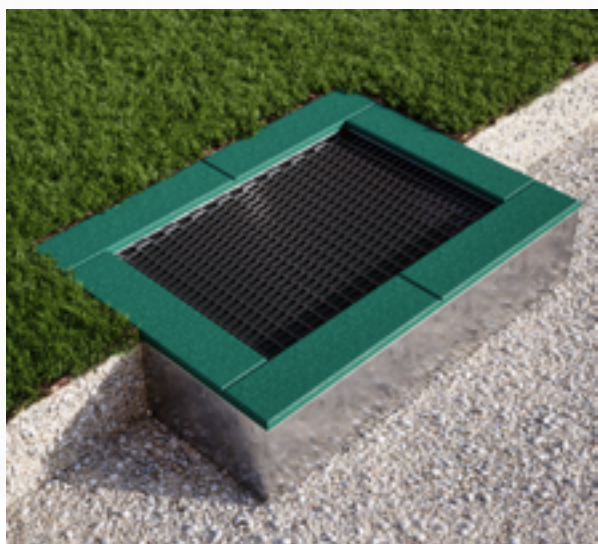


**PRODUCT CARD**
**RECTANGULAR TRAMPOLINE**
**Cat. name: TR1 x 1.5 x 2.5**

One-piece non-opening - jump mat: lamellas



<b>Length</b>	150 cm
<b>Width</b>	250 cm
<b>Height</b>	40 cm
<b>Depth of foundation</b>	40 cm
<b>Dimension of the jumping mat</b>	100 x 200 cm
<b>Area of use of the device</b>	450 x 450 cm
<b>Weight of the trampoline</b>	~200 kg
<b>Mat deflection</b>	do 25 cm (+/- 3cm)

Construction and support structure made of hot-dip galvanized steel.

Jump mat: made of polyamide lamellas, threaded on a stainless steel cord coated with a PVC sheath, attached to springs, which are attached to the rods inside the construction. The edges of the jump mat are covered with a 40 mm thick EPDM / SBR rim, with a polyurethane-based adhesive glued to the frame.

**Installation instructions**

Make a 40 cm deep earth OR concrete hole. The opening should be larger than the dimensions of the trampoline by 30-40 mm per side. Before inserting the trampoline, level the ground.



Number of users per 1 trampoline: 1  
 User age: from 3 years upwards  
 Freefall: max 90 cm



Trampoline made in accordance with PN EN1176-1