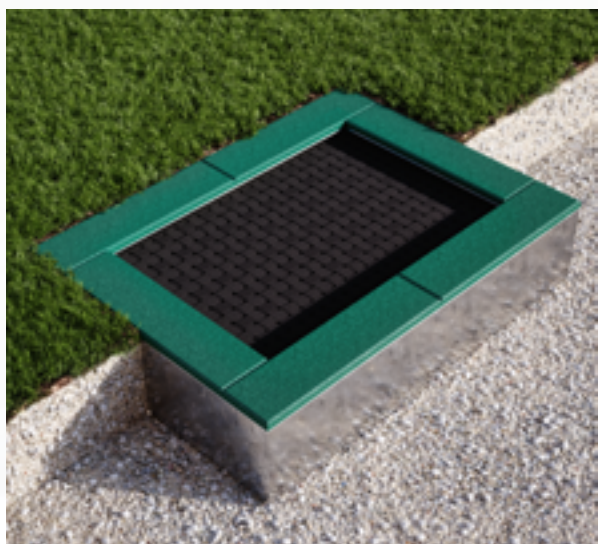


PRODUCT CARD

RECTANGULAR TRAMPOLINE

Cat. name: TRI x 1.25 x 2.0

One-piece non-opening - jump mat: tapes



Length	125 cm
Width	200 cm
Height	40 cm
Depth of foundation	40 cm
Dimension of the jumping mat	75 x 150 cm
Area of use of the device	450 x 450 cm
Weight of the trampoline	~160 kg
Mat deflection	do 25 cm (+/- 3cm)

Construction and support structure made of hot-dip galvanized steel.

Jump mat: Strong straps made of polypropylene yarns with an even and dense weave. Belts finished with a stainless steel fastening, attached to springs, which are attached to the rods inside the construction. The edges of the jump mat are covered with a 40 mm thick EPDM / SBR rim, with a polyurethane-based adhesive glued to the frame.

Installation instructions

Make a 40 cm deep earth OR concrete hole. The opening should be larger than the dimensions of the trampoline by 30-40 mm per side. Before inserting the trampoline, level the ground.



Number of users per 1 trampoline: 1
User age: from 3 years upwards
Freefall: max 90 cm



Trampoline made in accordance with PN EN1176-1

