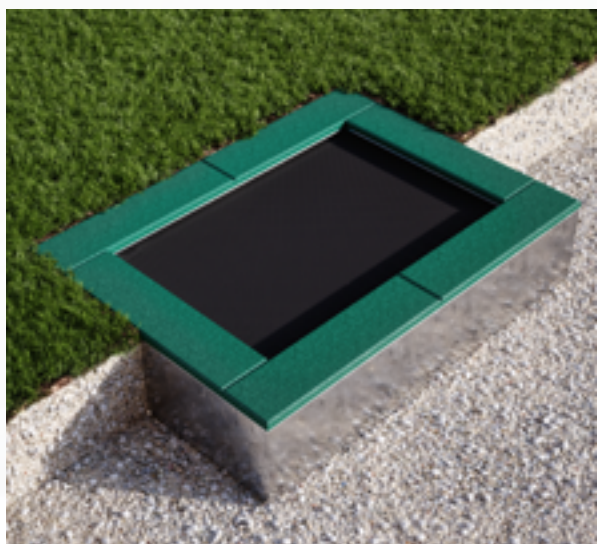


**PRODUCT CARD**
**RECTANGULAR TRAMPOLINE**
**Cat. name: TRI x 1.25 x 2.0**

One-piece non-opening - jump mat: mesh



|                                     |                    |
|-------------------------------------|--------------------|
| <b>Length</b>                       | 125 cm             |
| <b>Width</b>                        | 200 cm             |
| <b>Height</b>                       | 40 cm              |
| <b>Depth of foundation</b>          | 40 cm              |
| <b>Dimension of the jumping mat</b> | 75 x 150 cm        |
| <b>Area of use of the device</b>    | 450 x 450 cm       |
| <b>Weight of the trampoline</b>     | ~160 kg            |
| <b>Mat deflection</b>               | do 25 cm (+/- 3cm) |

Construction and support structure made of hot-dip galvanized steel.

Jump mat: Strong straps made of polypropylene yarns with an even and dense weave. Belts finished with a stainless steel fastening, attached to springs, which are attached to the rods inside the construction. The edges of the jump mat are covered with a 40 mm thick EPDM / SBR rim, with a polyurethane-based adhesive glued to the frame.

**Installation instructions**

Make a 40 cm deep earth OR concrete hole. The opening should be larger than the dimensions of the trampoline by 30-40 mm per side. Before inserting the trampoline, level the ground.



Number of users per 1 trampoline: 1  
 User age: from 3 years upwards  
 Freefall: max 90 cm



Trampoline made in accordance with PN EN1176-1